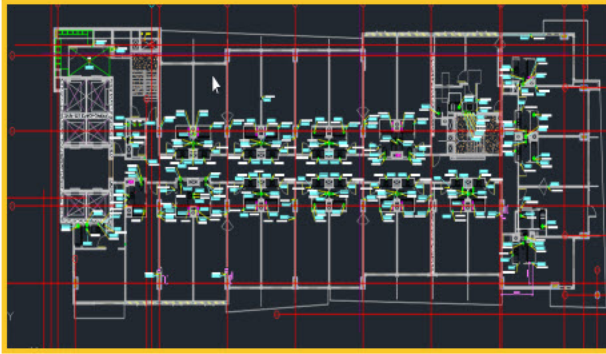


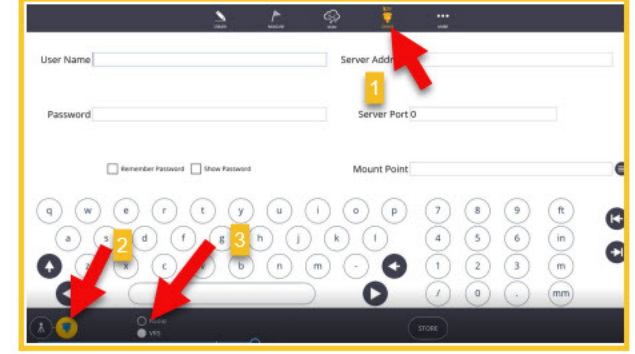
GNSS Rover Quick Start Guide



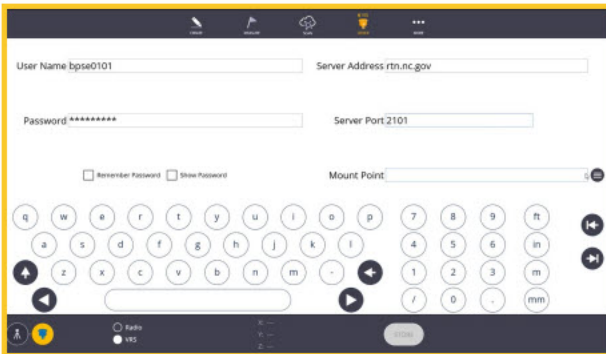
1 Load Drawing and Point Data and Connect Tablet to Hotspot.



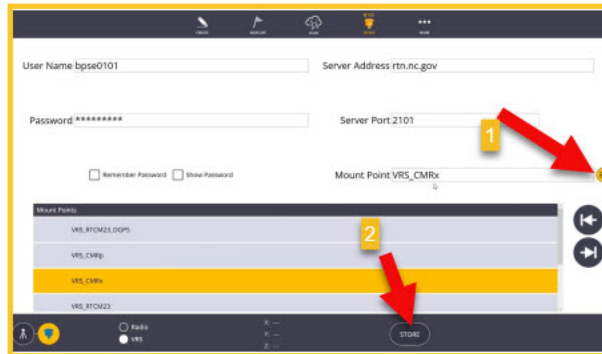
2 Tap "Device" and Select the SPS Icon. If Device is not Found Tap "Find". Once Found Tap "Connect".



3 Tap "Device" then "Settings", Select the Rover Icon. Change communications to "VRS".



4 Add Credentials to Connect to a VRS Network. Each State has it's own Network. (Contact your Local Network Provider)



5 Select your Mount Point then Tap "Store". Trimble recommends CMRx or CMRp as the Mount Point.



6 Select and Shoot Control Points. A Minimum of Three Points are Needed for 2D (X,Y) and Four Points are Needed to Achieve 3D (X,Y,Z).