



# The Power of Trimble Field Link





# Trimble Field Link

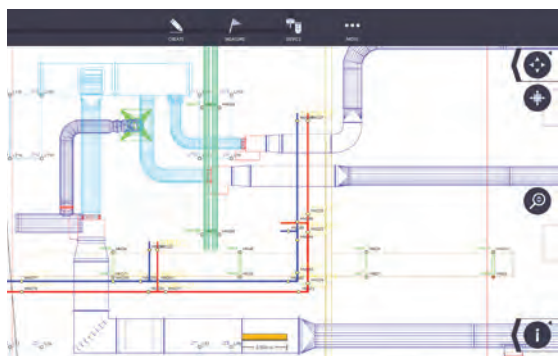
## Smaller Margins Require Smarter Technology Investments

Projects these days leave little room for error to stay profitable. With tight budgets on nearly every project, contractors know that a lack of efficiency can affect the ability to bid better and build better. Success relies on the coordination of key variables to make sure costly rework is avoided even as timelines shrink.

To stay ahead in such competitive times, contractors need a partner with deep industry knowledge rooted in how people work. And, with increased reliance on 3D models and model coordination, having a technology portfolio that delivers precision, visibility and optimized control is necessary for success. Trimble's innovation and leading reputation in the construction industry comes from understanding the contractor experience. It's a thoughtful process of listening first, then optimizing the right solutions for our customers.

## Enter Trimble Field Link

Trimble Field Link is the definitive construction layout software solution designed specifically for contractors – not surveyors. Featuring the right combination of tools for each layout job, the solution includes the Trimble Field Link software powering the ruggedized Trimble Tablet and delivering a useful connection to a variety of layout tools. This unified combination of hardware and software increases productivity and accuracy in the field, reduces rework, provides easy-to-use, task-based workflows and delivers a greater return on investment.



# Trimble Field Link

Taking full advantage of the Trimble Tablet's processor and multi-touch screen functionality, Trimble Field Link has been designed to work the way you work. Featuring intuitive workflows, office (BIM) to field connection, 2D & 3D job data in the field and an easy to use interface, Trimble Field Link is the single software solution contractors trust for their construction layout tasks.

## One software means one solution for all layout tasks

Never switch between multiple software solutions or controller units again. With a simplified user interface (UI) and improved task-based workflows, Trimble Field Link now works with a range of instruments for both interior and exterior layout including Trimble Robotic Total Stations, the Trimble Rapid Positioning Tool and GNSS receivers. Field layout crews can now use the most suitable positioning technology for unique layout tasks—without switching between multiple controller units or field software, and requiring no additional training.

## Better visibility - connecting the office (BIM) to the field

Give field crews the visibility to the detailed information they need to make faster, more accurate decisions. Trimble provides contractors the only process for construction-ready BIM, connecting them to the important field details and actionable items for project visibility and ongoing maintenance. Featuring CAD-based field point creation solutions as part of the detailing process, contractors can easily export a design file and import that file into Trimble Field Link - helping to reduce errors and maximize productivity.

### Advantages include:

- ▶ View and execute field stakeout routines within 3D models created in popular BIM detailing packages
- ▶ View field point attributes created in the office that define various data points such as: manufacturer, component type and size, etc.
- ▶ Collect field point deviations within the stakeout routines and export for use in BIM detailing solutions back in the office.
- ▶ Create design locations from CAD such as endpoint, midpoint, arc/circle, node, insertion, and intersection.



## Modular Feature Packs – Get only what you need.

Scalability and choice is essential when considering new software. With tighter budgets, contractors want to purchase a solution that delivers the functionality they need with the scalability to grow. Trimble's modular feature packs provide contractors the flexibility to implement only the functionality that they need, and to scale incrementally as their business grows.

## Customizable, easy-to-use interface

With an interface that's easy to navigate and featuring the ability to customize views, users are up and running faster with less downtime for learning. Additionally, users have the ability to customize their view of the layout screen to view in full-screen mode, as a list, as a 2D overhead map, and as a 3D map. Featuring a "Bullseye" view in layout mode, horizontal and vertical in-tolerance notifications are displayed when the prism is near the field point.







# Trimble Solutions to Fit Your Work

Trimble is able to offer the contractor several different configurations to get the job done right for your type of work. Below are some options that may fit your company's workflow:

**Trimble Active Tracking Technology**— Trimble Active Tracking Technology provides the highest level of reliable field tracking in the industry. Active Tracking keeps your instrument locked on to ONLY your prism and prevents the instrument from locking to other reflective surfaces (vests, safety signs, other prisms, etc.) allowing you to maximize your layout productivity in the field.

**Trimble Vision** — Trimble VISION technology integrates calibrated digital cameras with Trimble robotic total stations. These instruments have the ability to collect data, stream video and capture images from the perspective of the instrument.

**Trimble Visual Layout** — Utilizing Trimble Field Link and specific Trimble robotic total stations, users have the ability to perform prism-less Visual Layout. The beam (red/green depending on model) will point directly at your desired location. It will even adjust automatically for any elevation differences!

**Trimble Tablets**— The Trimble T10 Tablet has a 10" screen and includes a built in 2.4 GHz radio. The Trimble FZ-M1 is a small powerful tablet that is 1/3 of the weight. The Trimble FZ-M1 has a 7" screen and includes an external radio.

**Trimble Field Link Modules** — Trimble Field Link Core allows for contractors to utilize all the basic and advanced functions of Trimble Field Link to perform construction layout and collect information. Additional modules available to offer even more:

**Advanced Feature Module**— With the Advanced Feature Module, the field operator will be able to view all their model information in a 3D format, rather than only a top down view. When the need arises to position the location of embeds, interior walls, exterior panels, prefabricated stair landings and steel beam connections or pockets, this pack guides and adjusts the DR Laser to determine the exact location based on the true position of the erected or existing structure. This pack also includes an advanced layer management function, ability to create customized layout lists and additional reports.

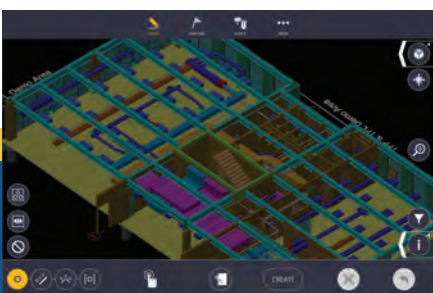
**Surface Module** — Surface Module allows you to utilize your current Trimble robotic total station to measure floor flatness, produce a detailed report of high or low areas with accurate volume calculations, and allows for layout of areas that need to be marked in the field for cut/fill.

**Site Control Module** — With the Site Control Module, the field operator is able to be confident in the extra accuracy collecting measurement information by utilizing total station round collection.

## Office Software

**Trimble Field Link Office** — No CAD? No problem. Trimble Field Link Office is a simple and easy-to-use tool for preparing and checking layout data for the field in the office. With the common interface between the office and field versions of Trimble Field Link, contractors experience increased productivity and more accurate data on their projects.

**Trimble Field Points** – Trimble Field Points is designed for the contractors utilizing AutoCAD® or Revit® and needing the ability to easily create 2D and 3D field points within their preferred design file.



# One Software, Multiple Platforms



## Trimble Robotic Total Station Solutions

We don't mean to disrespect your tape measure, but there's a better way to position yourself on the job site.

Increase productivity:  
Save time so you can finish jobs faster.

Trimble Accurate:  
Achieve results you can hang your reputation on.

Easy to use: Anyone on your crew can use it, from the most to the least experienced.

Versatile: With paper plans or digital designs, the Trimble Total Station Solutions meet the unique demands of every job.

## Trimble GNSS Solutions

The combined technology of the Trimble® SPS986 GNSS Receiver system and Trimble Field Link layout software provides contractors with an easy to use system for layout solutions.

Overcome Obstructions  
Expand the reach of your GNSS rover to sites that were previously inaccessible.

Minimize Setup  
Use satellite tracking to reduce the amount of setup time required.



## Trimble X7 Scanning Solution

High-speed 3D laser scanning system allowing for scan and BIM data to be referenced, registered & refined in the field.

New Trimble X-Drive deflection system enables automatic calibration to ensure accuracy on every scan with no downtime for calibration service.

High sensitivity time-of-flight EDM to effectively capture dark and reflective surfaces.

Unique Trimble Registration Assist for automatic registration, refinement and referencing to leave the site with confidence.

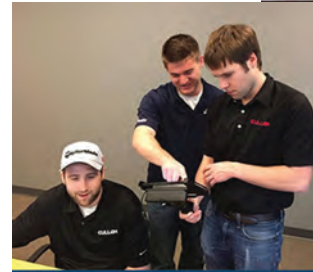


# Field Solutions Services

## Training

Our training can improve the bottom-line by increasing efficiency, confidence and overall knowledge. Our classes are tailored to specific users and their skill levels. We also boast the ability to bring complex functionality to levels that are easily understood by anyone.

- Classroom
- On-Site
- Field Hardware
- Field & Office Software



## Rentals

Our rental fleet includes the most up-to-date Trimble equipment to meet your design and construction needs. We have a wide variety of rental inventory available for fast delivery. All Trimble rental equipment is available for both long term and short term rentals. We also take time to calibrate, configure and test everything before delivery, giving you more time to work.

Requesting rental gear is easy and fast through our website or local BuildingPoint representative.



## Service Center

We are committed to serving our customer to the greatest extent and boasting one of the fastest turnaround times in the country. We are an authorized Tier-3 Preferred Trimble Service Provider for all Trimble equipment. Our client services include a highly trained and knowledgeable service department, client support and more. With over a decade of providing clients with the highest level of support, we are proud to do everything we can to make sure customers are completely satisfied and set to perform the best work possible.





# Support Agreement Options

Our mission is to help you get maximum return on your investment. To help, we're pleased to offer this subscription- based suite of powerful support offerings.

**Software Upgrades**—Access and download new product releases as soon as they become available. These releases introduce new features, fixes, and enhancements to existing capabilities.

**Maintenance Releases**—Regularly scheduled releases, or service packs (SPs), with firmware for your hardware maintenance provides product fixes and minor feature enhancements.

**Technical Support**—Get a full array of support— email, telephone, online, and in the field.

**Toll-free Telephone Support**—Our staff are available Mon- Fri, 7:00 a.m. to 4:30 p.m.

**Service Support**—Get an opportunity to become a “Priority Service Member”. You will receive “priority” service on all hardware repairs. Some options even include “Guaranteed Service Loaner” for service actions that require more time to resolve.

**Online submissions**—Request a demo, support, service, or ask general questions, all at the convenience of your computer at [www.BuildingPointMidwest.com](http://www.BuildingPointMidwest.com)

**User Communication**—Our Facebook, Twitter and Website are used for holding discussions and posting user generated content. It serves the community of experienced product users and is moderated by BuildingPoint.

**Quarterly Support Newsletter**—This electronic publication provides our user community with the latest information on our products and services.

**Monthly Continuing Education Classes** – Each quarter there will be a Trimble certified instructor lead training class focused on the latest Trimble releases at a reduced rate.

Support Package	None	Bronze	Silver	Gold
Expedited Service	4th Priority	3rd Priority	2nd Priority	1st Priority
Phone/Email Support		✓ Unlimited	✓ Unlimited	✓ Unlimited
On-Site Support		✓ 4 Hours	✓ 8 Hours	✓ 8 Hours
Discount on Service Parts & Labor			✓ 10% Discount	✓ 10% Discount
Discount on Quarterly Education Classes			✓ 50% Discount	✓ 100% Discount
Discount on Service Rental			✓ 50% Discount	✓ 100% Discount
Full Total Station Warranty Coverage			✓	✓
Included Clean & Calibration			RTS573/RTS673/RTS655 \$495 Value RTS773: \$695 Value RPT/RTS873: \$895 Value	RTS573/RTS673/RTS655 \$495 Value RTS773: \$695 Value RPT/RTS873: \$895 Value
Free Ground Shipping			✓	✓
Trimble Locate2Protect	\$294 Per Unit (\$500 Install Fee)	\$294 Per Unit (\$500 Install Fee)	\$294 Per Unit (\$500 Install Fee)	\$294 Per Unit (\$500 Install Fee)
Support Package Cost 1st Unit	RTS573/RTS673/RTS655 \$0 RTS773: \$0 RPT/RTS873: \$0	RTS573/RTS673/RTS655 \$200 RTS773: \$250 RPT/RTS873: \$300	RTS573/RTS673/RTS655 \$1,200 RTS773: \$1,400 RPT/RTS873: \$1,600	RTS573/RTS673/RTS655 \$2,000 RTS773: \$2,400 RPT/RTS873: \$2,800
Support Package Cost Additional Unit(s)	RTS573/RTS673/RTS655 \$0 RTS773: \$0 RPT/RTS873: \$0	RTS573/RTS673/RTS655 \$100 RTS773: \$150 RPT/RTS873: \$200	RTS573/RTS673/RTS655 \$800 RTS773: \$1,000 RPT/RTS873: \$1,200	RTS573/RTS673/RTS655 \$1,200 RTS773: \$1,600 RPT/RTS873: \$2,000





# Trimble RPT/TFL Core Kit

Part Number/Description	Qty.	List Price	Discount	Amount
<b>RPT600-B</b> Trimble RPT600 Rapid Positioning System: 78501040 RPT600 (w/Transportation Case and Card Box) x1 101106-00 RPT600 360 Cat-eye prism x1 101107-00 RPT600 80mm Square Cat-eye Wall Target (Pack of 5) x2 103775 RPT600 Safety Guide x1 104086 RPT600 Field Calibration Target x1 51003007-MEP: Rod - Trimble Standard Telescopic Rod 2.6m x 1 MEP-CONN-USER - Trimble Connect Business - One (1) Year Subscription	1	\$ 14,405.05	(\$ 0.00)	<b>\$ 14,405.05</b>
<b>116109-10</b> Trimble FZ-M1 Tablet (No Radio) - No Software 5200-32-FTG Panasonic Pole Mount	1	\$ 3,325.00	(\$ 0.00)	<b>\$ 3,325.00</b>
<b>TFL-CORE-FTG</b> Trimble Field Link Software: Core	1	\$ 2,000.00	(\$ 0.00)	<b>\$ 2,000.00</b>
<b>EWBC-TFL-STOCK</b> TPP - Software Maintenance - Trimble Field Link (12 m expiration)	1	\$ 495.00	(\$ 0.00)	<b>\$ 495.00</b>
<b>90553-TR</b> Tripod - Dual Clamp Tri-Max with Trimble Logos	1	\$ 427.00	(\$ 0.00)	<b>\$ 427.00</b>
<b>34109-00-MEP</b> BIPOD,GPS,RTS,W/CLEAT, TRIMBLE	1	\$ 172.95	(\$ 0.00)	<b>\$ 172.95</b>
<b>115128-FT-BKIT</b> 115128-FT - Dual Slot Charger Kit 99511-30 - Battery - Li-Ion, 10.8V, 70Wh (x2)	1	\$ 970.00	(\$ 0.00)	<b>\$ 970.00</b>
<b>SA-GB-Bronze</b> Support Agreement: Green Beam Instrument Bronze One (1) Year	1	\$ 300.00	(\$ 0.00)	<b>\$ 300.00</b>

<b>Grand Total</b>	<b>\$ 22,095.00 + TAX</b>
--------------------	---------------------------

Cash	Finance	Fleet
NET 30: \$22,095.00 + TAX Check on Delivery: \$21,654 + TAX 2% Discount	12 Month: \$1,897 + TAX 24 Month: \$958 + TAX 36 Month: \$662 + TAX	6 Month: \$1,050 12 Month: \$945 24 Month: \$840 36 Month: \$735

\* Subject to Credit Approval & Additional Fees. Rates also subject to change and are to be used as estimates.



# Trimble RPT/TFL Upgrade Options

Tablet	Upgrade Cost	Selected
Trimble FZ-M1 Tablet (No Radio)	\$0	
Trimble T10 Tablet (No Radio)	\$500	
Field Software	Upgrade Cost	Selected
Trimble Field Link: Core	\$0	
Trimble Field Link: Advanced	\$2,000	
Trimble Field Link: Site Control Module	\$500	
Trimble Field Link: Surface Module	\$500	
Prism	Upgrade Cost	Selected
Standard 360 CatEye Target	\$0	
Standard 360 Prism	\$1,045	
Accessories	Upgrade Cost	Selected
SLP2 Kit	\$2,350	
Column Clamp	\$500	
Tripod Stabilizer	\$100	
Office Software	Upgrade Cost	Selected
Trimble Field Link Office	\$750	
Trimble Field Points	\$1,995	
Training / Support	Upgrade Cost	Selected
Training Block - Eight (8) Hours	\$1,600	
<b>Green Beam Instrument: RPT</b>		
Bronze Package: Included	Silver Package: \$1,300 Upgrade	Gold Package: \$2,500 Upgrade
Trimble RPT/TFL System	Totals	
RPT/TFL Base Package	\$22,095.00	
Upgrade Options Total		
Subtotal		

Features	SPS986	RPT	RTS573	RTS673	RTS773	RTS873	RTS771
Angular Accuracy	-	5"	3"	3"	3"	3"	1"
Layout Accuracy	<1/2"	<1/16"	<1/16"	<1/16"	<1/16"	<1/16"	<1/16"
		DR HP	DR Plus	DR HP	DR HP	DR HP	DR HP
EDM Technology	-	500'	4,300'	500'	500'	500'	500'
Active Tracking	-	No	Yes	Yes	Yes	Yes	Yes
Maximum Range	15,800'	150'	2,300'	2,300'	2,300'	2,300'	2,300'
Communication	Bluetooth *	WiFi	2.4 GhZ	2.4 GhZ	2.4 GhZ	2.4 GhZ	2.4 GhZ
Trimble Vision	-	✓			✓	✓	✓
Trimble Visual Layout	-	✓		✓	✓	✓	✓
DR		Green				Green	
Laser	-	(Unfocused)	Red	Red	Red	(Focused)	Red
Line of Sight Required	No	Yes	Yes	Yes	Yes	Yes	Yes





# Trimble RTS573/TFL Core Kit

Part Number/Description	Qty.	List Price	Discount	Amount
<b>RTS573252210-B</b> Trimble RTS573 3"/2" Robotic Total Station, DR PLUS (Bundle) 51003007-MEP: Rod - Trimble Standard Telescopic Rod 2.6m MEP-CONN-USER - Trimble Connect Business - One (1) Year Subscription	1	\$ 18,298.00	(\$ 0.00)	<b>\$ 18,298.00</b>
<b>116109-10-R</b> Trimble FZ-M1 Tablet (External Radio) - No Software 93675-00 TDL 2.4 Radio 5200-32-FTG Panasonic Pole Mount	1	\$ 5,155.00	(\$ 0.00)	<b>\$ 5,155.00</b>
<b>TFL-CORE-FTG</b> Trimble Field Link Software: Core	1	\$ 2,000.00	(\$ 0.00)	<b>\$ 2,000.00</b>
<b>EWBC-TFL-STOCK</b> TPP - Software Maintenance - Trimble Field Link (12 m expiration)	1	\$ 495.00	(\$ 0.00)	<b>\$ 495.00</b>
<b>90553-TR</b> Tripod - Dual Clamp Tri-Max with Trimble Logos	1	\$ 427.00	(\$ 0.00)	<b>\$ 427.00</b>
<b>34109-00-MEP</b> BIPOD,GPS,RTS,W/CLEAT, TRIMBLE	1	\$ 172.95	(\$ 0.00)	<b>\$ 172.95</b>
<b>58128001-BC</b> Prism - 360 Prism incl height adapter to standard rod, prism const: 0.002m	1	\$ 1,045.00	(\$ 0.00)	<b>\$ 1,045.00</b>
<b>115128-FT-BKIT</b> 115128-FT - Dual Slot Charger Kit 99511-30 - Battery - Li-Ion, 10.8V, 70Wh (x2)	1	\$ 970.00	(\$ 0.00)	<b>\$ 970.00</b>
<b>SA-SI-Bronze</b> Support Agreement: Standard Instrument Bronze One (1) Year	1	\$ 200.00	(\$ 0.00)	<b>\$ 200.00</b>

**Grand Total** **\$ 28,762.95 + TAX**

Cash	Finance	Fleet
NET 30: \$28,762.95 + TAX Check on Delivery: \$27,818+ TAX 2% Discount	12 Month: \$2,469 + TAX 24 Month: \$1,247 + TAX 36 Month: \$861 + TAX	6 Month: \$1,650 12 Month: \$1,485 24 Month: \$1,320 36 Month: \$1,155

\* Subject to Credit Approval & Additional Fees. Rates also subject to change and are to be used as estimates.



# Trimble RTS/TFL Upgrade Options

Instrument	Upgrade Cost	Selected
RTS573	\$0	
RTS673	\$5,000	
RTS773 (Vision)	\$9,000	
RTS873 (Focused Green Beam)	\$11,300	
RTS771	\$12,800	
Field Software	Upgrade Cost	Selected
Trimble Field Link: Core	\$0	
Trimble Field Link: Advanced	\$2,000	
Trimble Field Link: Site Control Module	\$500	
Trimble Field Link: Surface Module	\$500	
Prism	Upgrade Cost	Selected
Standard 360 Prism	\$0	
MT1000 Active Prism	\$1,750	
Tablet	Upgrade Cost	Selected
Trimble FZ-M1 Tablet / External Radio	\$0	
Trimble T10 Tablet / Internal Radio	\$500	
Accessories	Upgrade Cost	Selected
SLP2 Kit	\$2,350	
Column Clamp	\$500	
Tripod Stabilizer	\$100	
Office Software	Upgrade Cost	Selected
Trimble Field Link Office	\$750	
Trimble Field Points	\$1,995	
Training / Support	Upgrade Cost	Selected
Training Block - Eight (8) Hours	\$1,600	
<b>Standard Instrument: RTS573/RTS673/RTS771</b>		
Bronze Package: Included	Silver Package: \$1,000 Upgrade	Gold Package: \$1,800 Upgrade
<b>Vision Instrument: RTS773</b>		
Bronze Package: \$50 Upgrade	Silver Package: \$1,200 Upgrade	Gold Package: \$2,200 Upgrade
<b>Green Beam Instrument: RTS873</b>		
Bronze Package: \$100 Upgrade	Silver Package: \$1,400	Gold Package: \$2,600 Upgrade
Trimble RTS/TFL System		Totals
RTS/TFL Base Package		\$28,762.95
Upgrade Options Total		
Subtotal		







# Trimble SPS986/TFL Core Kit

Part Number/Description	Qty.	List Price	Discount	Amount
<b>91986-00-FTG</b> Kit - GNSS, SPS986 Smart Antenna, WiFi no radio Includes charger and two (2) batteries MEP-CONN-USER - Trimble Connect Business - One (1) Year Subscription	1	\$ 9,600.00	(\$ 0.00)	<b>\$ 9,600.00</b>
<b>VW50990-12-FTG</b> Option - Precise Rover, SPS986 Construction	1	\$ 4,600.00	(\$ 0.00)	<b>\$ 4,600.00</b>
<b>VW51951-80-FTG</b> Option - Combo GLN/GAL/BeiDou/Triple Freq, SPS986, Construction	1	\$ 2,500.00	(\$ 0.00)	<b>\$ 2,500.00</b>
<b>116109-10</b> Trimble FZ-M1 Tablet (No Radio) - No Software 5200-32-FTG Panasonic Pole Mount	1	\$ 3,325.00	(\$ 0.00)	<b>\$ 3,325.00</b>
<b>TFL-CORE-FTG</b> Trimble Field Link Software: Core	1	\$ 2,000.00	(\$ 0.00)	<b>\$ 2,000.00</b>
<b>EWBC-TFL-STOCK</b> TPP - Software Maintenance - Trimble Field Link (12 m expiration)	1	\$ 495.00	(\$ 0.00)	<b>\$ 495.00</b>
<b>43169-10</b> Rod - 2.0m Carbon Fiber Range Pole without Bipod	1	\$ 235.00	(\$ 0.00)	<b>\$ 235.00</b>
<b>34109-00-MEP</b> BIPOD,GPS,RTS,W/CLEAT, TRIMBLE	1	\$ 172.95	(\$ 0.00)	<b>\$ 172.95</b>
<b>SA-SI-Bronze</b> Support Agreement: Standard Instrument Bronze One (1) Year	1	\$ 200.00	(\$ 0.00)	<b>\$ 200.00</b>

<b>Grand Total</b>	<b>\$ 23,127.95 + TAX</b>
--------------------	---------------------------

Cash	Finance	Fleet
NET 30: \$23,127.95 + TAX Check on Delivery: \$22,666 + TAX 2% Discount	12 Month: \$1,986 + TAX 24 Month: \$1,003 + TAX 36 Month: \$692 + TAX	6 Month: \$1,200 12 Month: \$1,080 24 Month: \$960 36 Month: \$840

\* Subject to Credit Approval & Additional Fees. Rates also subject to change and are to be used as estimates.



# Trimble SPS986/TFL Upgrade Options

Tablet	Upgrade Cost	Selected
Trimble SPS986 Base Station Kit	\$15,827	
Tablet	Upgrade Cost	Selected
Trimble FZ-M1 Tablet (No Radio)	\$0	
Trimble T10 Tablet (No Radio)	\$500	
Field Software	Upgrade Cost	Selected
Trimble Field Link: Core	\$0	
Trimble Field Link: Advanced	\$2,000	
Trimble Field Link: Site Control Module	\$500	
Trimble Field Link: Surface Module	\$500	
Trimble GNSS VRS Now: Regional (1Y)	\$1,650	
Office Software	Upgrade Cost	Selected
Trimble Field Link Office	\$750	
Trimble Field Points	\$1,995	
Training / Support	Upgrade Cost	Selected
Training Block - Eight (8) Hours	\$1,600	
Trimble SPS986/TFL System		Totals
SPS986/TFL Base Package		\$23,127.95
Upgrade Options Total		
Subtotal		

Features	SPS986	RPT	RTS573	RTS673	RTS773	RTS873	RTS771
Angular Accuracy	-	5"	3"	3"	3"	3"	1"
Layout Accuracy	<1/2"	<1/16"	<1/16"	<1/16"	<1/16"	<1/16"	<1/16"
		DR HP	DR Plus	DR HP	DR HP	DR HP	DR HP
EDM Technology	-	500'	4,300'	500'	500'	500'	500'
Active Tracking	-	No	Yes	Yes	Yes	Yes	Yes
Maximum Range	15,800'	150'	2,300'	2,300'	2,300'	2,300'	2,300'
Communication	Bluetooth *	WiFi	2.4 GhZ	2.4 GhZ	2.4 GhZ	2.4 GhZ	2.4 GhZ
Trimble Vision	-	✓			✓	✓	✓
Trimble Visual Layout	-	✓		✓	✓	✓	✓
DR		Green				Green	
Laser	-	(Unfocused)	Red	Red	Red	(Focused)	Red
Line of Sight Required	No	Yes	Yes	Yes	Yes	Yes	Yes



# Trimble Scanning Solutions



## Trimble TX8 3D Scanner

An optimal scanner for building construction applications, the Trimble TX8 combine the high quality output needed for precise data capture and the scanning-range appropriate for most building projects.

Using Trimble's patented Lightning technology, the Trimble TX8 captures precise data at high speed over its full measurement range. And since Trimble Lightning technology is less susceptible to variations in surface types and atmospheric conditions, you can capture complete datasets from each station. To colorize scans, an integrated camera can quickly take full field-of-view HDR images.

## Trimble X7 Scanner

Simple. Smart. Professional. 3D laser scanning solution built for Building Construction with Constructible workflows in mind.

Simple: Manage your X7 with the same easy to use software as your layout process, Trimble Field Link, while also viewing scan data immediately in the field.

Smart: The first 3D scanner to provide an auto-calibration routine to ensure data accuracy, eliminate downtime from annual calibration service, and provide a lower overall cost of ownership.

Professional: With in-field registration leave the jobsite with a registered point cloud aligned to your Constructible model and export to your preferred CAD program.



## Trimble RealWorks / Trimble Cloud Engine

Trimble Realworks point-cloud software enables you to register, visualize, explore and manipulate as-built data collected from your 3D laser scanner.

Automatically register scan data into a composite point cloud and targetless registration, cloud-based registration, or auto-extract targets for precise alignment.






Trimble Cloud Engine combines as-built point cloud and 3D design data for deviation analysis, clash detection and change management in VDC and BIM applications. Customizable content sharing solutions from the Bloom Desktop with On-Premise file sharing on your company's VPN for complete data opacity, with your Microsoft Azure Cloud Storage Account, or host in the Cloud with AWS servers and accessed from any web browser.



# How Else Can We Help?

## Trimble AllTrak

Trimble's AllTrak™ Cloud Tool Management Solution lets contractors locate tools and see who is responsible for them. See what tools require servicing, what consumables are running low, and gain insight into usage. With AllTrak™ Cloud, you always know where your tools and equipment are and who is responsible for them.

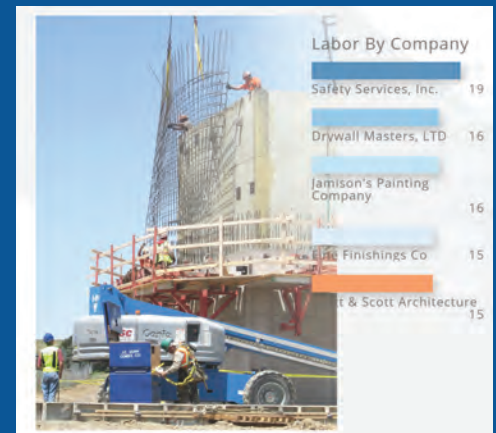
 Warehouse Asset Management	 Jobsite Asset Management	 Find Your Tools
 Rentals, Servicing, and Calibration	 Admin & Cost Tracking	



## Trimble CrewSight

CrewSight™ software combines a jobsite access control system with a worker database for increased site security. Plus, you can track time and attendance, safety documentation and compliance, and store your workforce registry. CrewSight creates automated reports and streamlines workforce communication with broadcast texts.

 Authorized Entry	 Labor Reporting	 Jobsite Security
 Health & Safety	 Easy Compliance	 Efficient Onboarding



## Mixed Reality Solutions

Mixed Reality to fit your workflow. Using Holographic data on the jobsite, workers can review 3D models overlaid directly on a physical environment.

Save Time: Visualize, Express and Interact with 3D Data.

Collaborate: Remote Stakeholders can see design intent.

Engage: Encourage buy-in amongst diverse stakeholders.

Contextualize: Assets are given context when overlaid onto the real world.



# The Expert In Design-Build-Operate Solutions

BuildingPoint Midwest & Gulf Coast, serving Illinois, Wisconsin, Michigan, Indiana, Alabama, Mississippi and Louisiana are dedicated to improving the productivity for the construction industry through advanced and intuitive technologies. Our portfolio of Trimble solutions streamlines communication and collaboration throughout the Design-Build-Operate (DBO) lifecycle to realize greater efficiency and profitability. Over the past six (6) years, Trimble has acquired more than thirty (30) companies in the construction industry to realize its vision for BuildingPoint. Through the adoption of our advanced software, hardware and service offerings, general contractors, construction managers, subcontractors, architects, structural professionals and building owners realize greater efficiency and profitability.

BuildingPoint is the global network of Trimble distribution partners specialized in supporting customers with the adoption of Trimble Buildings' portfolios. BuildingPoint employs highly trained and knowledgeable specialists who are experienced in working with companies to insure increased productivity, profitability and streamline the DBO process.

## BuildingPoint: Construction is our Heritage

### BuildingPoint MW/GC Corporate

12360 S. Industrial Drive E.  
Plainfield, IL 60585  
855.332.7527

### BuildingPoint Gulf Coast

124 Toledo Drive  
Lafayette, LA 70506  
855.332.7527



Illinois | Iowa | Wisconsin | Michigan | Indiana | Alabama | Mississippi | Louisiana