

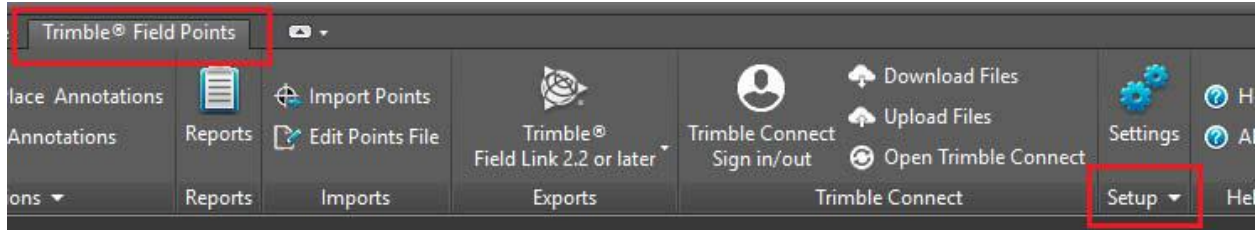
To borrow the Trimble Field Points network license onto a workstation so it can be used remotely without being connected to the server,

Open AutoCAD/Revit,

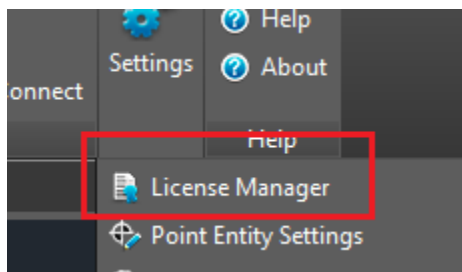
Open or start a drawing.

Tap on the *Trimble Field Points* tab

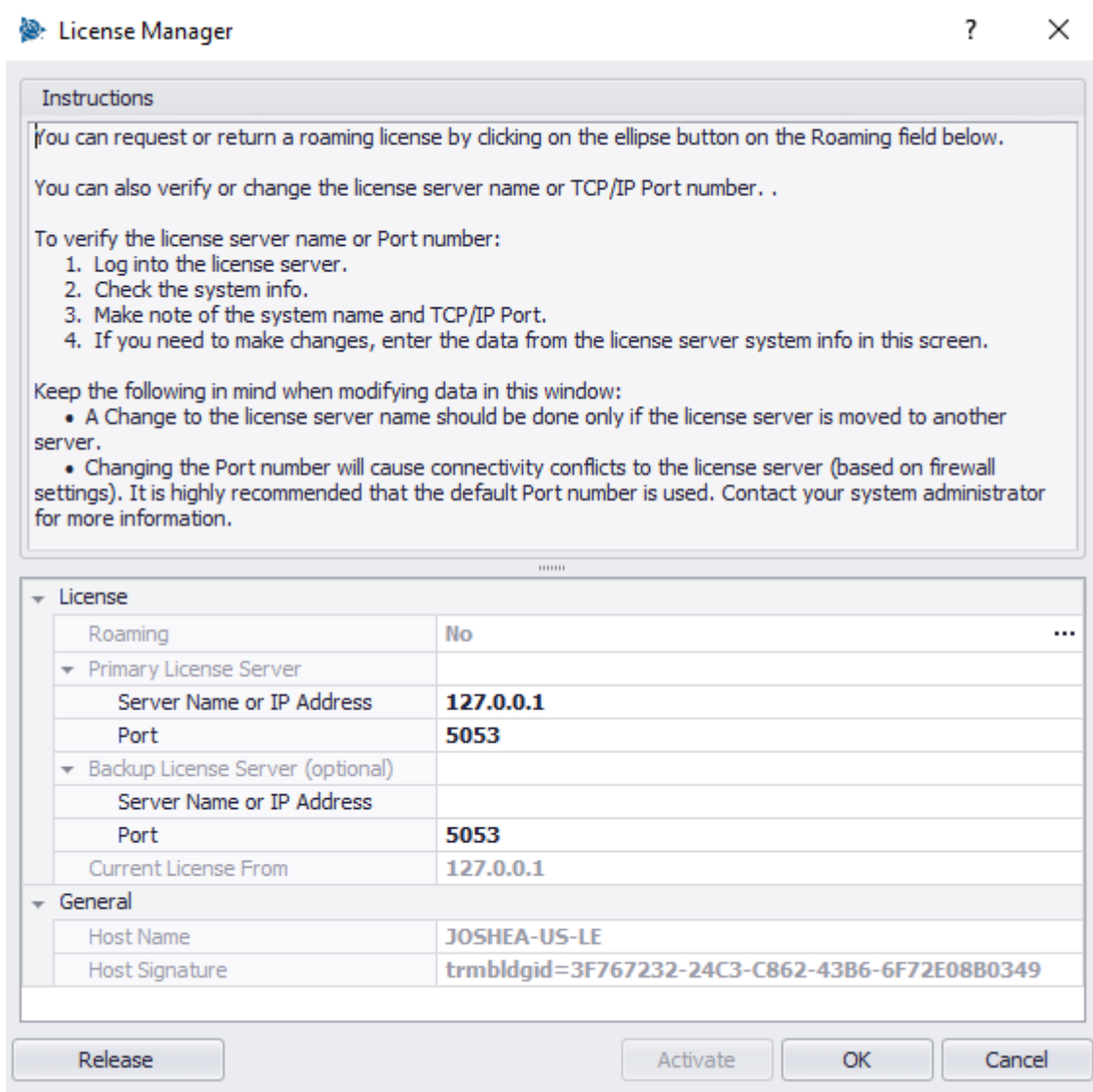
Click on the drop-down arrow beside *Setup*



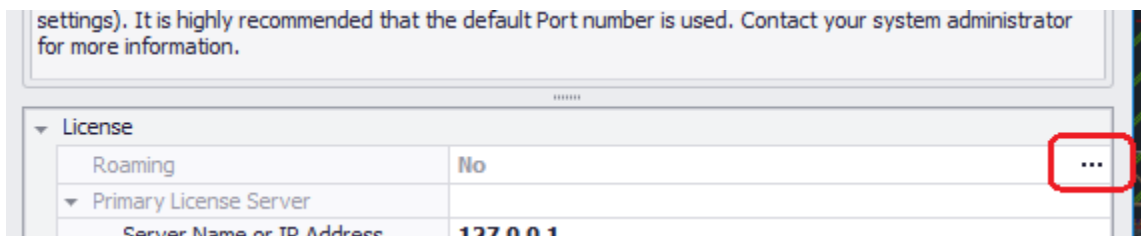
Then click on *License Manager*



It will open the License Manager dialog box

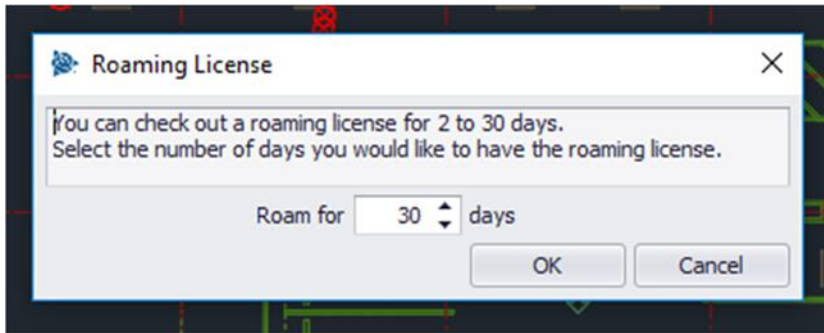


Look halfway down the box on the right side and find the ellipsis



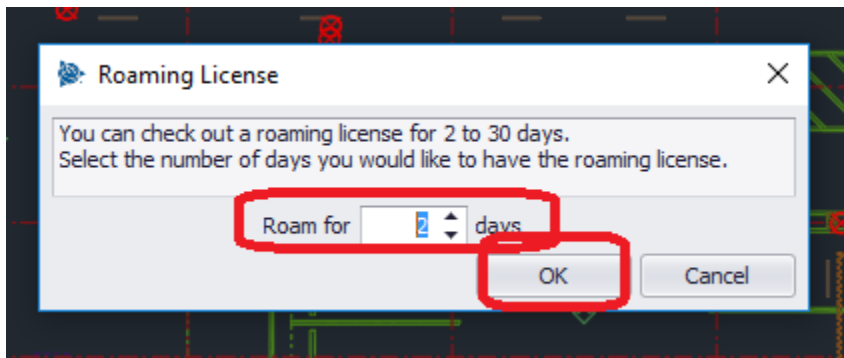
Click on the ellipsis

The Roaming License dialogue box will open



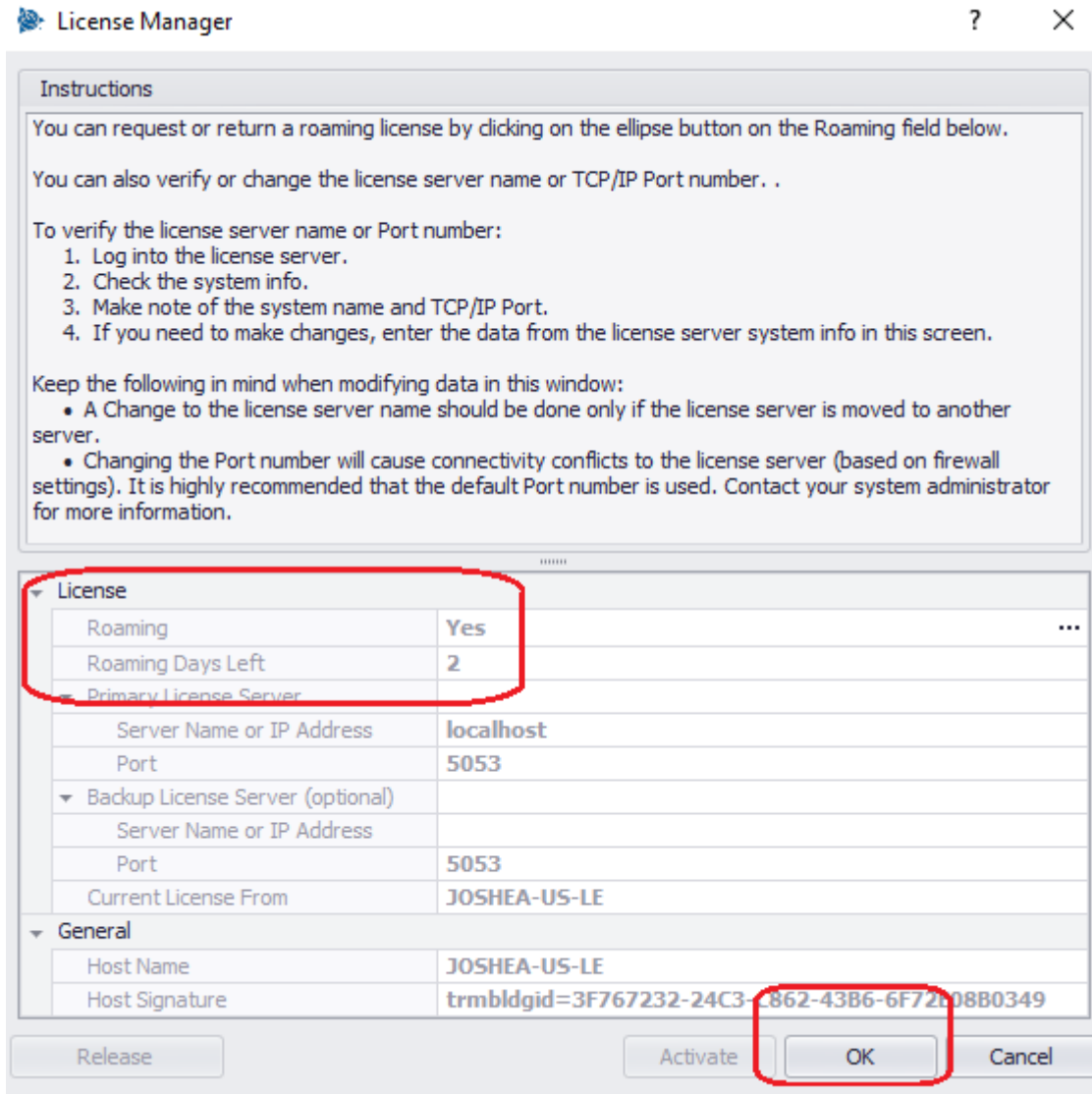
Choose the number of days you would like to check the license out for.

It will automatically return after the set days



Then click *OK*

Your License Manager dialogue box has now changed

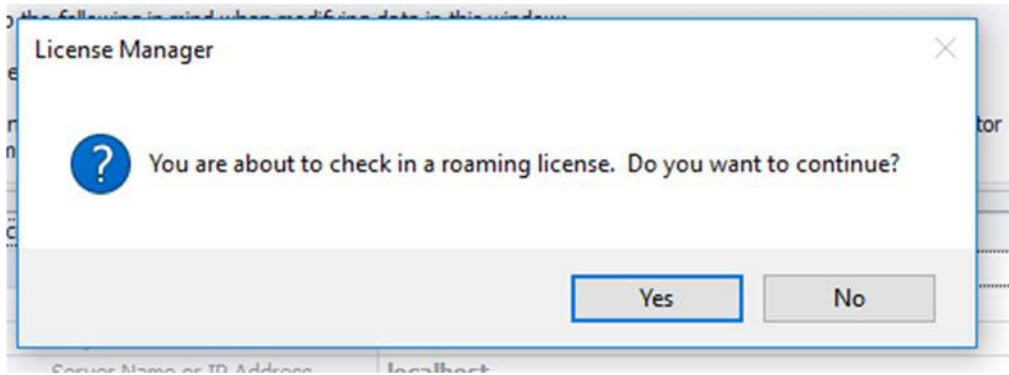


Click OK.

When you return, simply connect to the network with the server where the license is installed

Then repeat the steps on the first two pages of this document.

Once you click on the ellipsis you will be asked if you want to return the license



Simply click Yes, and the license is now available on the server again