

Trimble Field Points

TRIMBLE FIELD POINTS 2023 compatibility release

We are pleased to announce releases of the Trimble Field Points software v9.2 compatible with Autodesk® AutoCAD® 2023 and Autodesk® Revit® 2023.

This document provides you with an overview of enhancements and/or modifications included in this release of our software.

AutoCAD® 2023 Compatible Applications

- Compatibility Release v23.9.2

Revit® 2023 Compatible Applications

- Compatibility Release v23.9.2

TFLX Project file format export

- with this release export of the new FieldLink TFLX project file format is supported

What is Changing?

In an effort to be more aligned with the subscription based authoring software (AutoCAD and Revit) Field Points plugin is migrating to a subscription model. This comes with a better licensing platform that allows your IT department and /or administrator to better manage and distribute the Field Points software to the users that need it.

When will this change take effect?

Effective Immediately you will be able to start enjoying your Field Points subscription license. Please contact your Trimble Sales representative for subscription licenses.

Starting **January 1st, 2023** the server that facilitates the perpetual licensing will be discontinued.

How will this affect me?

Staying on perpetual Field Points: If you wish to stay on the perpetual license for the software the only effect you will see is if you decommission an old computer/server that has the license on it and need to re-install the Field Points license on the replacement computer/server. Or if RLM stops working (develops an error), we will not be able to fix the perpetual license. If this occurs the Trimble Tech Support team can

Date: August 2021

©2021 Trimble, Inc. All rights reserved. Trimble, the Globe & Triangle logo, Trimble Field Points is a trademark of Trimble, Inc., registered in the United States and in other countries. Other brand and product names are trademarks or registered trademarks of their respective holders.

help to facilitate an alternative perpetual license. Please note that your existing perpetual license will continue to work with the specific authoring software version you are currently using.

Migration to Subscription Field Points: If you migrate to a newer version of the authoring software you will also need to migrate to the subscription version of Field Points. If you choose to keep your perpetual licenses for the older versions we can accommodate your needs but highly encourage a complete migration. Please note the subscription license will work with the current authoring software version as well as the four previous 'concurrent' versions (this applies to Autodesk authoring software only). Your Trimble sales representative will be able to facilitate the order and communication will be sent to you via email with instructions on how to get up and running with the new subscription model.

Update Information

Please ensure that you install the Trimble Field Points software version compatible with the appropriate version of AutoCAD or Revit or ARES Commander.

Caution – It is not recommended that you upgrade an active project (especially in work shared Revit projects) unless you back it up first.

Caution – If you must upgrade a project before its completion, Please refer to Autodesk or ARES for best practices.

Caution – It is recommended that you create a backup of your project prior to any upgrade.

Trimble Field Points Installation through Trimble Installation Manager

Step 1: Download and Install Trimble Installation Manager (TIM)

Use the link below to download the Trimble Installation Manager (TIM)

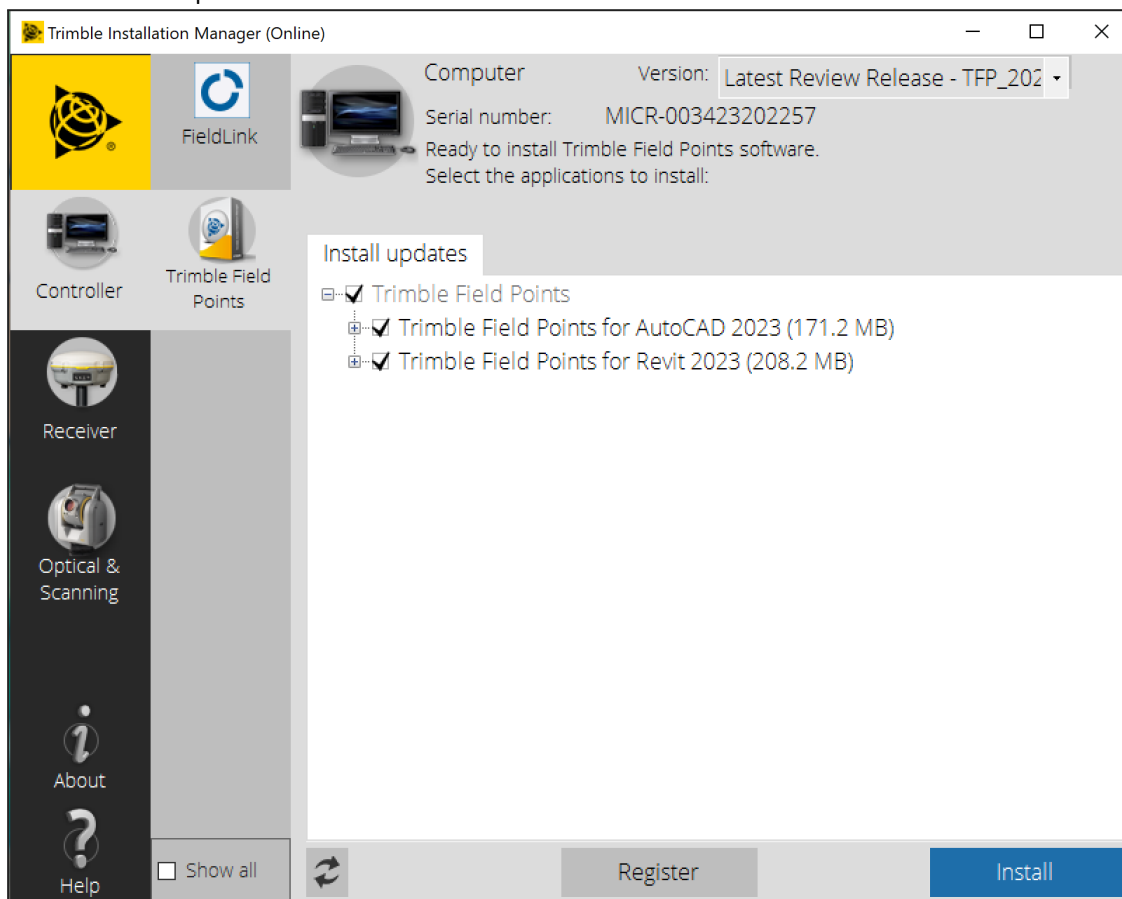
<https://www.trimble.com/installationmanager>

Select “TIM for Windows - Online” and run the installer.

Step 2: Installing Trimble Field Points

Once you have installed and launched TIM, please follow the instructions to install the Field Points software onto your PC.

1. Select the ‘Show all’ option.
2. Select the ‘Trimble Field Points’ button.
3. Using the drop down carrot select the desired version of Trimble Field Points.
4. Toggling the check boxes, choose the appropriate options.
5. Once you have the appropriate selections click the ‘Install’ button.
 - a. **Note:** The appropriate versions of AutoCAD or Revit or ARES Commander will need to be installed on your PC prior to this action.



Additional Support

Email: FTGSupport@trimble.com

Phone: 1-800-234-3758.